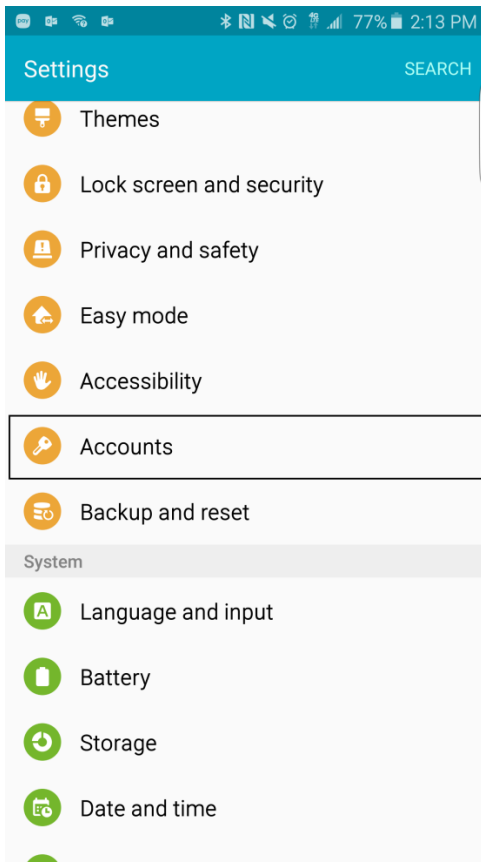
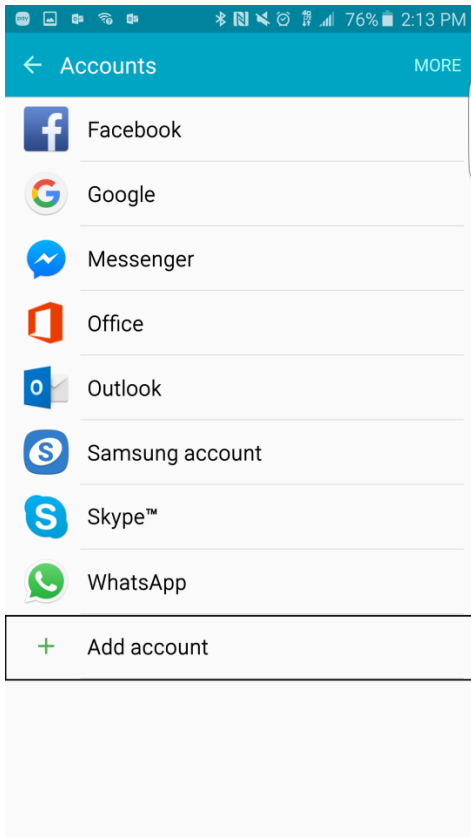


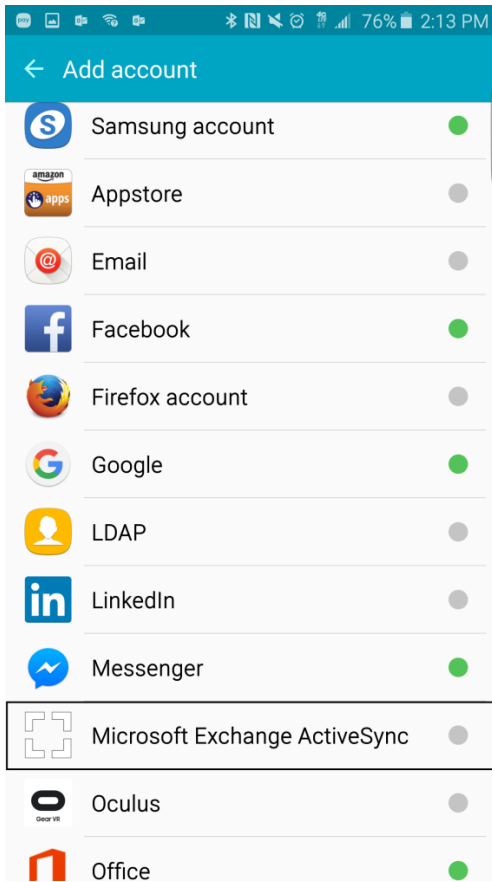
1. Navigate to Settings and press Accounts:



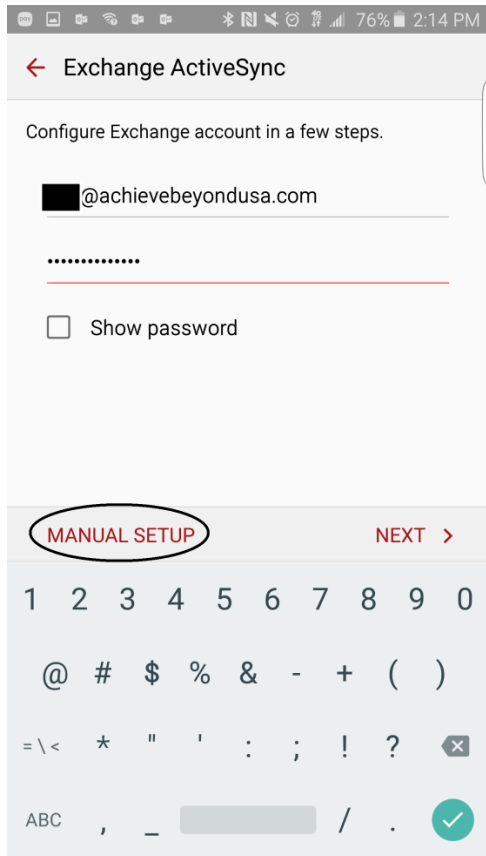
2. After pressing "Accounts," Press + Add account in the next screen:



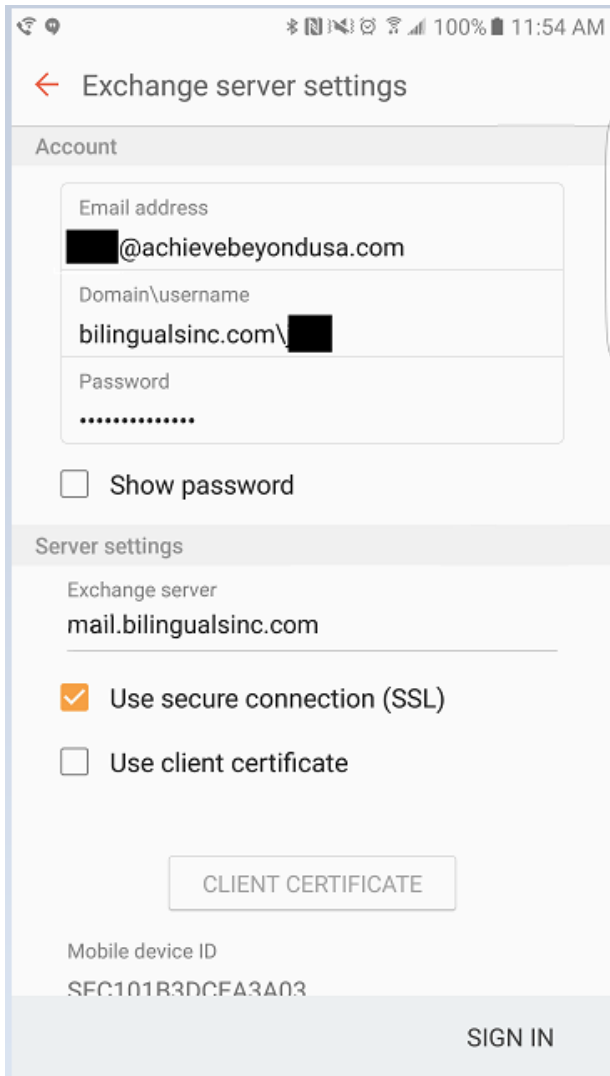
3. Scroll down until you see “Microsoft Exchange ActiveSync” and select it:



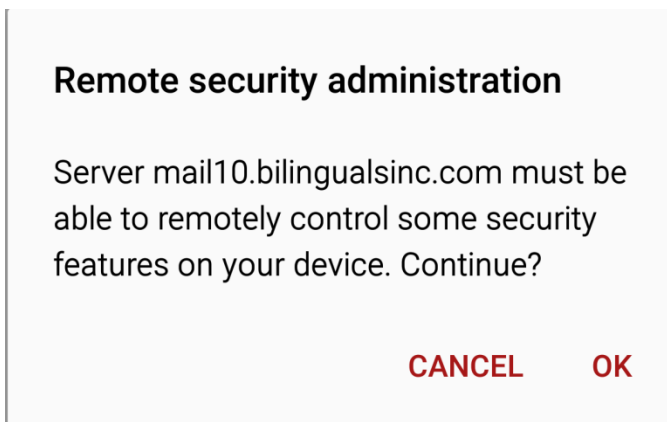
4. Enter in your E-mail and password and then click on Manual Setup:



5. In the next screen, the Exchange Server will be "mail.bilingualsync.com". In the Domain\username field, you will put "bilingualsync.com\[your username]"

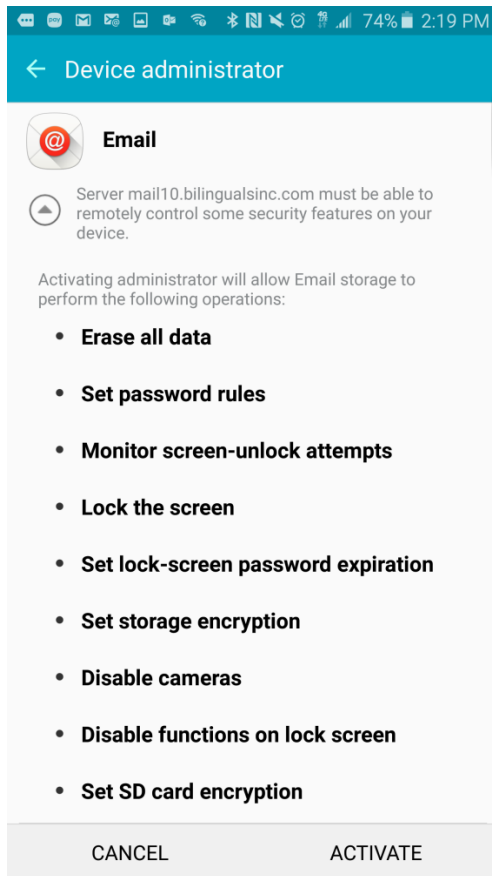


6. This screen will pop up, just click "OK"



7. After this, you will be prompted with a Device administrator screen. Adding our company e-mail to your phone requires you to have some sort of security lock on your phone. You can use PIN or

Fingerprints, or a Pattern Lock. ONE OF THIS MUST BE USED IN ORDER TO PROCEED TO ADD THE COMPANY E-MAIL TO YOUR PHONE.



8. After doing so, just press Done and you will be set to go.